

Partnering to Tackle Health Disparities

June 13, 2023



Key Topics

- Overview of the OHE
- Health Equity Findings
- Health Equity Implications

OHE Mission

Provide leadership to promote public awareness of health disparities, advocate for programs to eliminate health disparities, and collaborate with stakeholders to achieve measurable and sustainable improvement in health status of underrepresented populations.

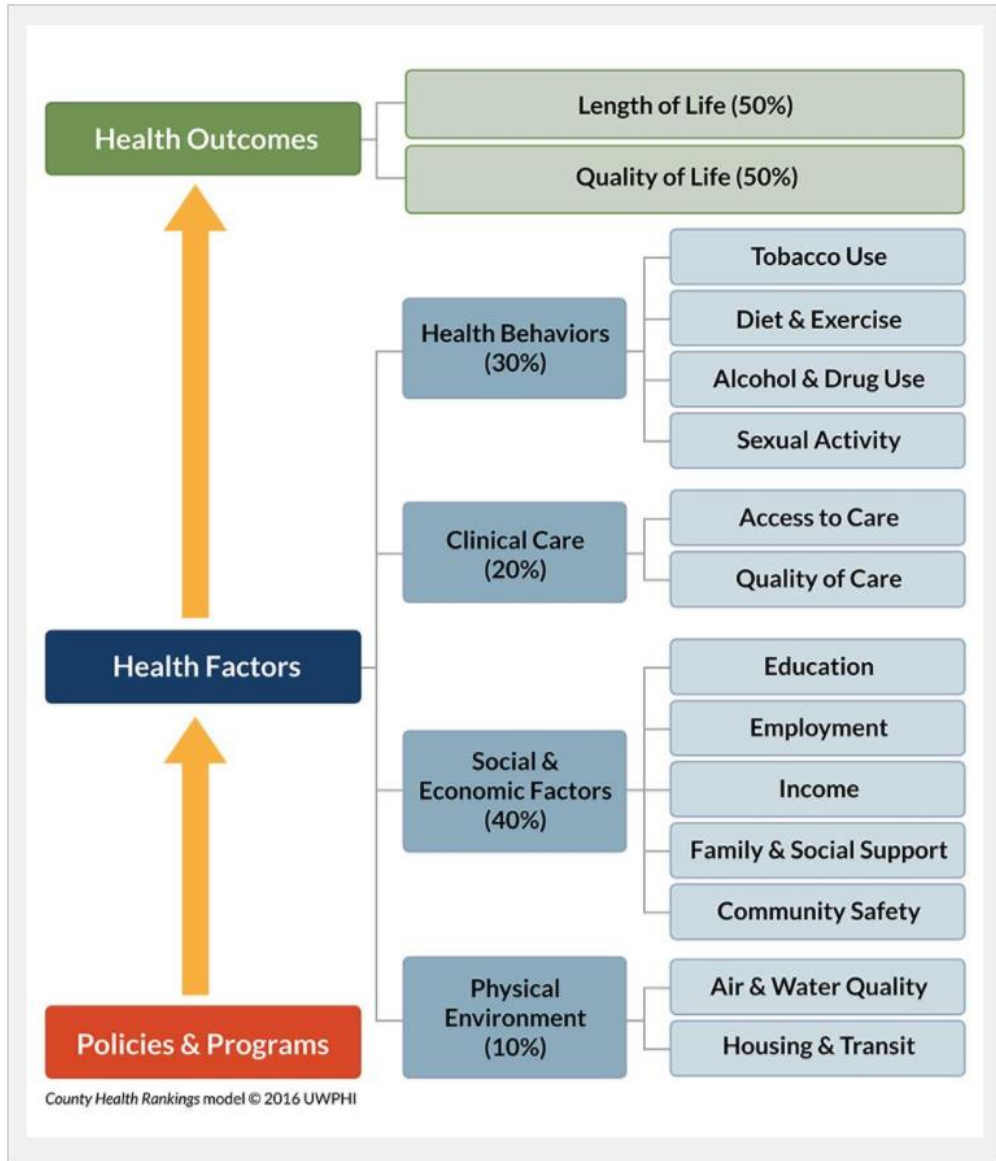
The State of Health Equity in Pennsylvania

HEALTH EQUITY REPORT

Health Disparities

- ~1.7 million Pennsylvanians, or 14% experienced food insecurity in 2015
- Blacks/African Americans and Hispanics/Latinos made about \$15,000 to \$18,000, respectively, less than whites in 2016
- Rural Pennsylvanians have limited access to health care
 - ▀ Transportation to get to a doctor who may be 20-30 miles away
- 2012-2016-Blacks/African Americans had a death rate from heart disease nearly 21% higher than white Pennsylvanians
- 2 in 5 LGBTQ teens experience bullying vs. 1 in 5 heterosexual teens
- The black/African American community accounts for a disproportionate number of homicides and suicides in Pennsylvania.

Factors that Impact Health



SHIP 2023-2028

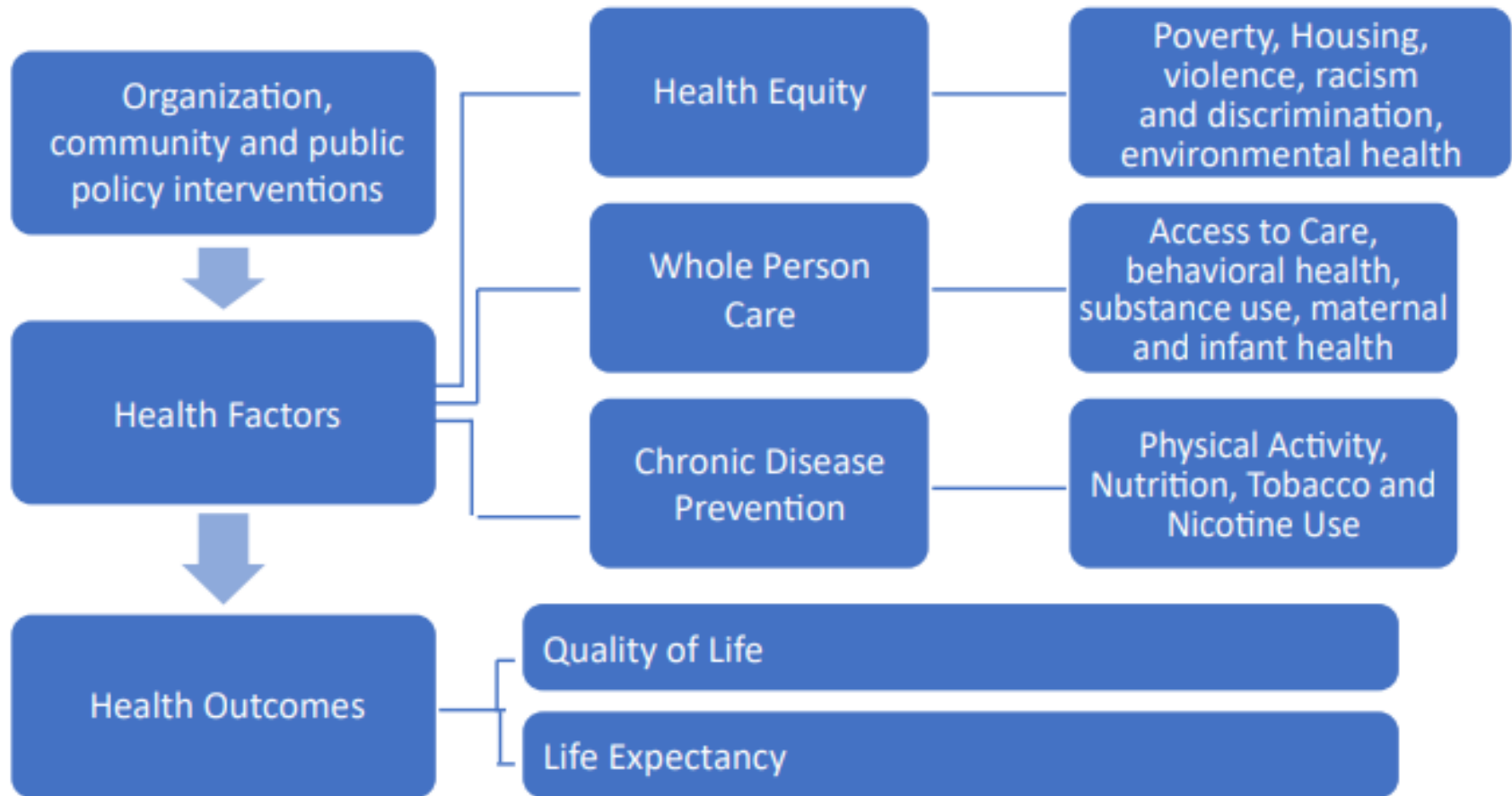


FIGURE 2. SHIP FRAMEWORK

Social Determinants of Health

- Definition
 - ▼ The factors that affect where people live, learn, work and play.
- Social determinants of health include:
 - ▼ Socioeconomic status;
 - ▼ Education;
 - ▼ Racism and discrimination;
 - ▼ Food security and nutrition;
 - ▼ Housing;
 - ▼ Built environment;
 - ▼ Access to health care;
 - ▼ Environmental hazards; and
 - ▼ Safety.

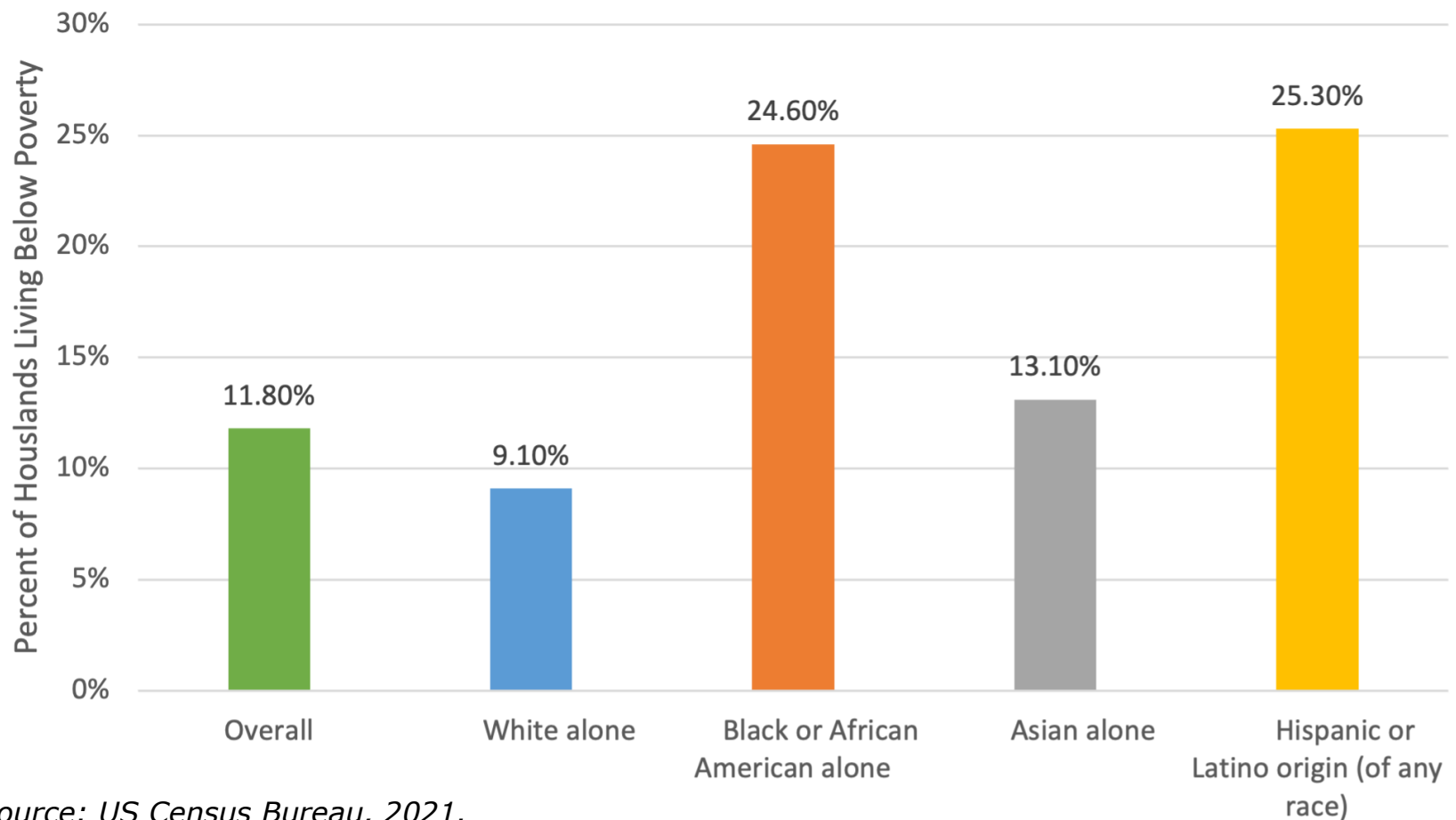
Racism and Discrimination

Nationally and throughout Pennsylvania, racism and discrimination has perpetually contributed to income disparities for people of color and between genders.

Racism and discrimination lead to the creation of systematic policies

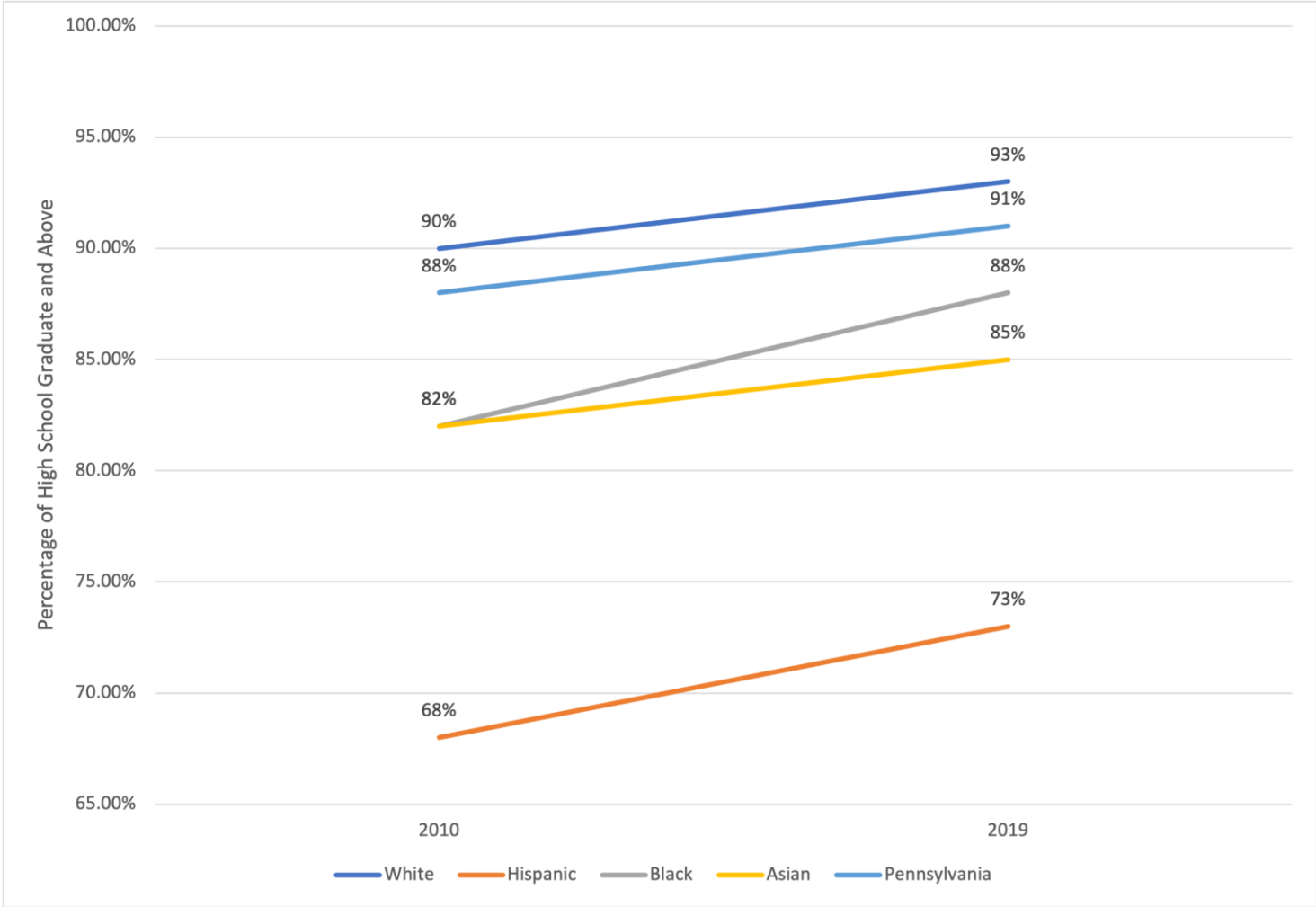
- ▣ Federal housing policies--redlining
- ▣ Individual practices

Socioeconomic Status



Source: US Census Bureau, 2021.

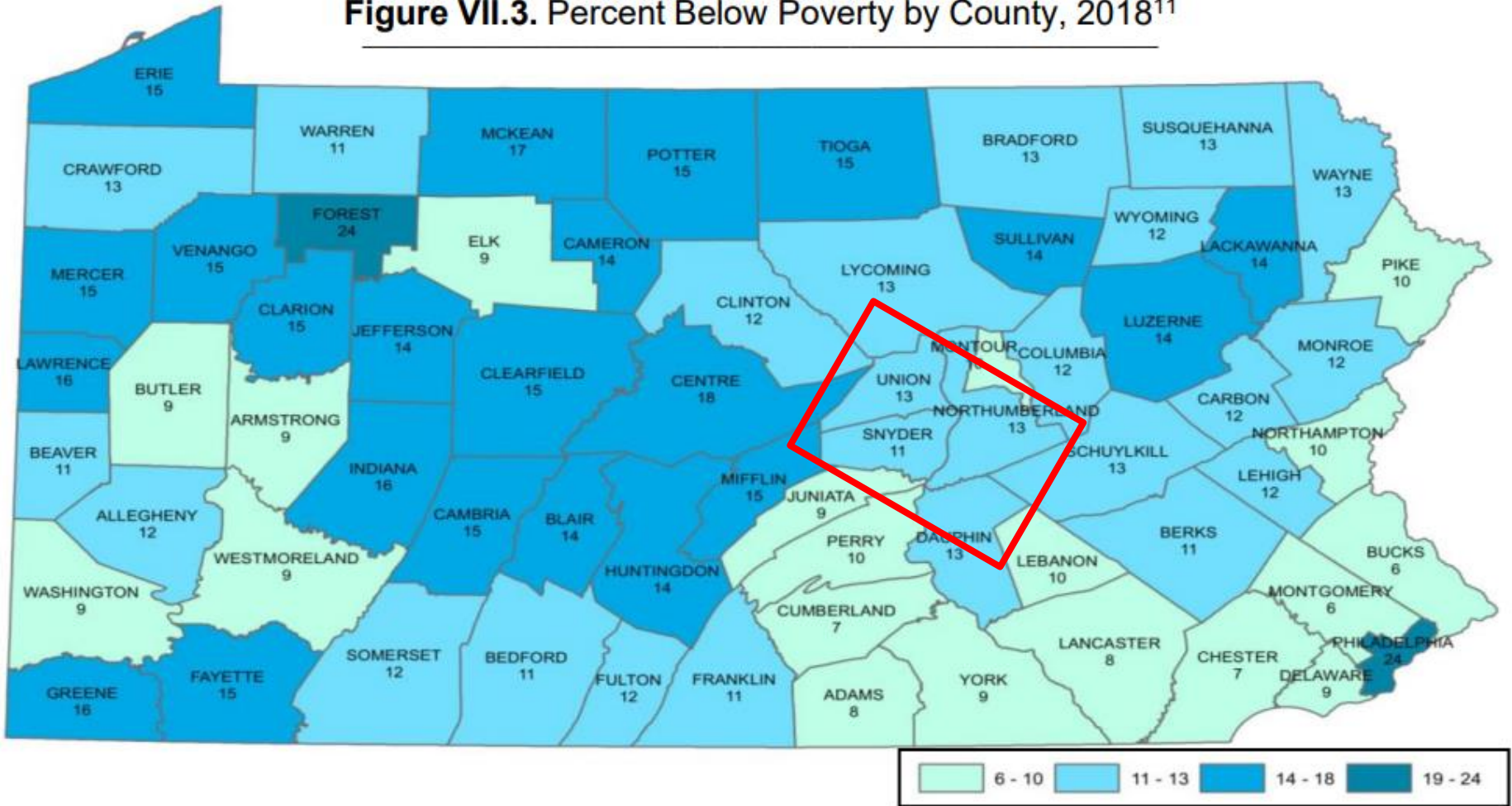
Education



Source: Pennsylvania Department of Education, 2010-2019.

Poverty

Figure VII.3. Percent Below Poverty by County, 2018¹¹

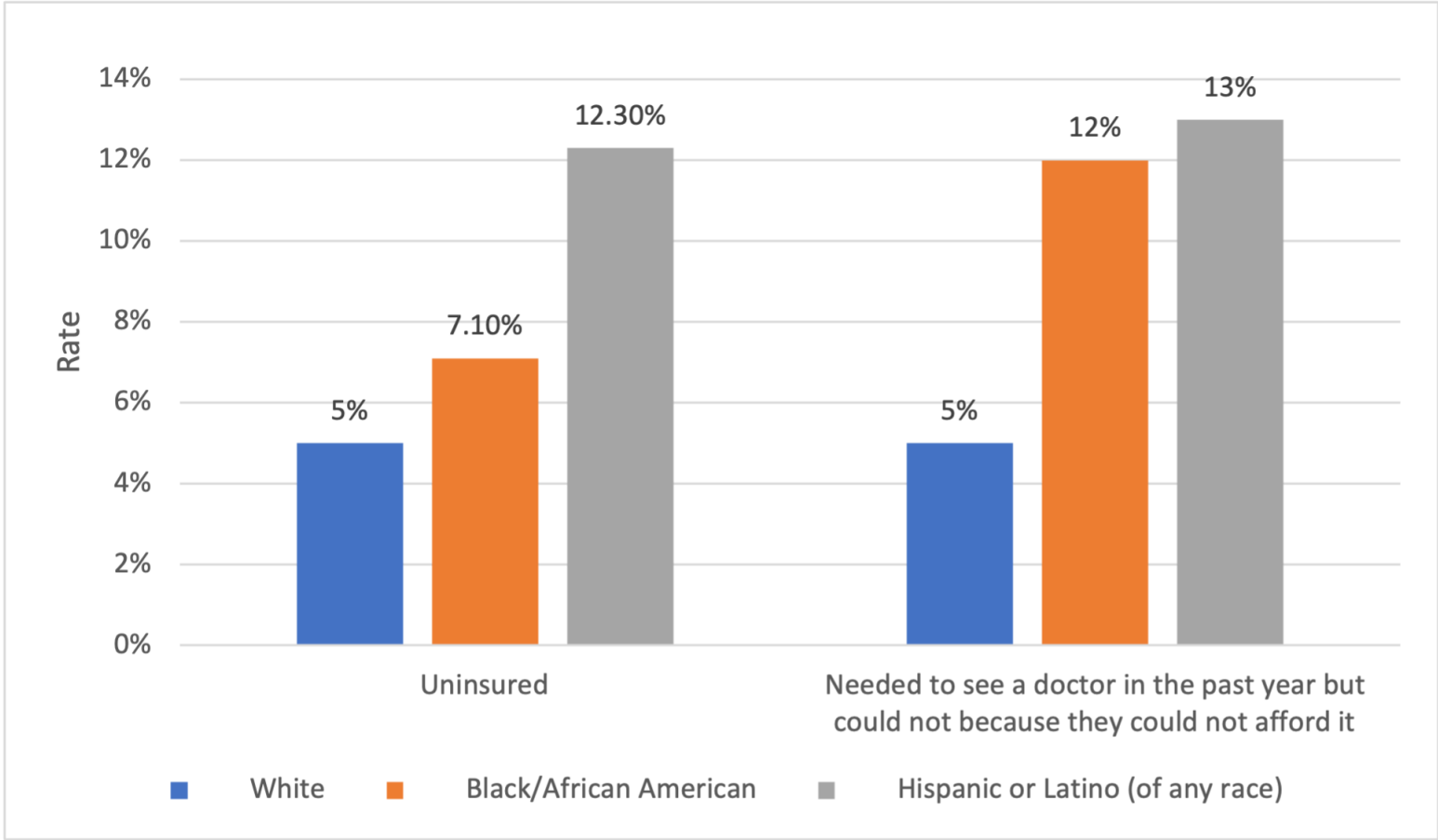


▶ Rural Health Equity

In rural Pennsylvania, geographical isolation contributes to disparities in health outcomes.

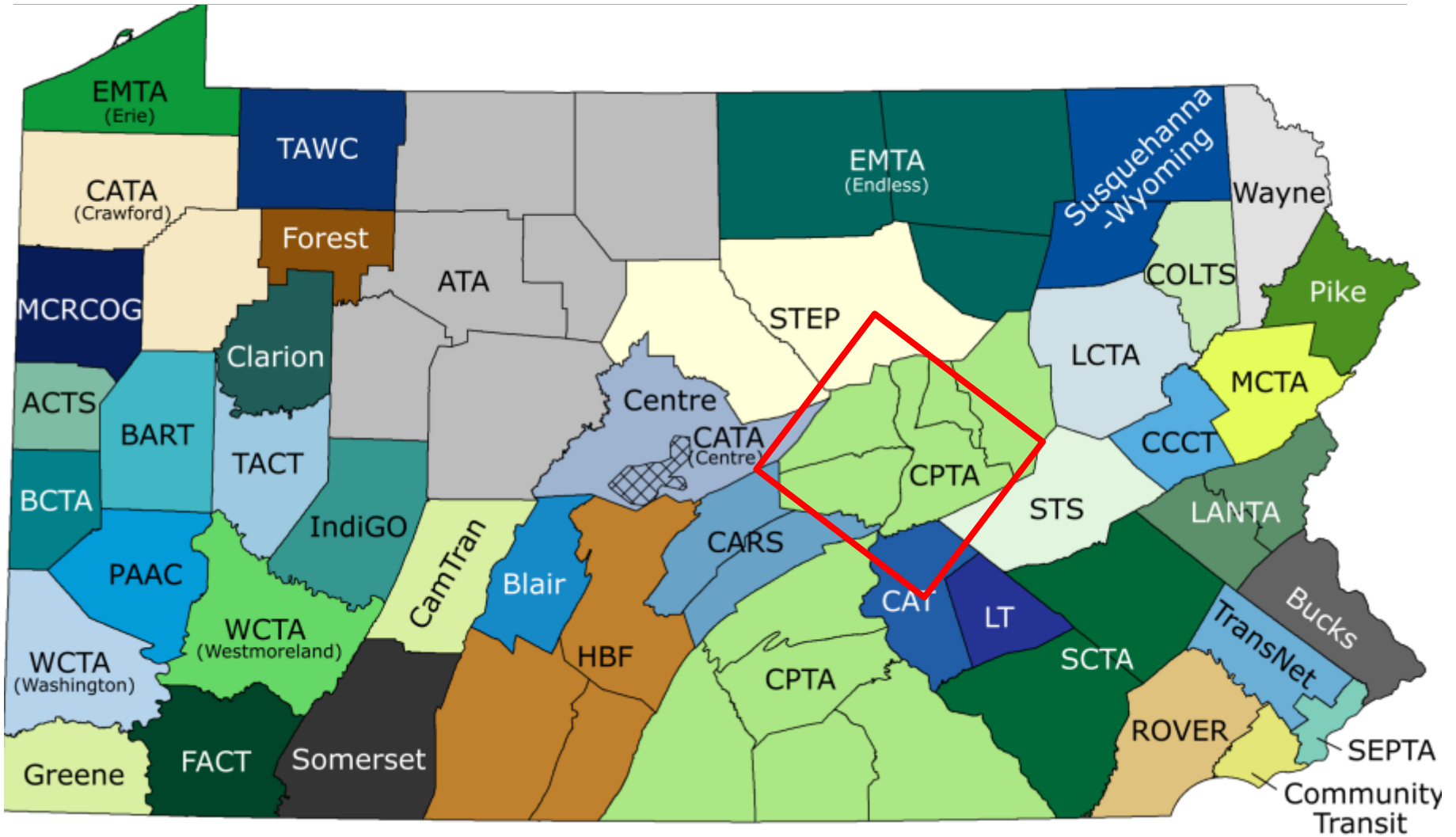
- Low primary care physician and healthcare provider numbers
- Dental care is sparse

Access to Quality Health Care



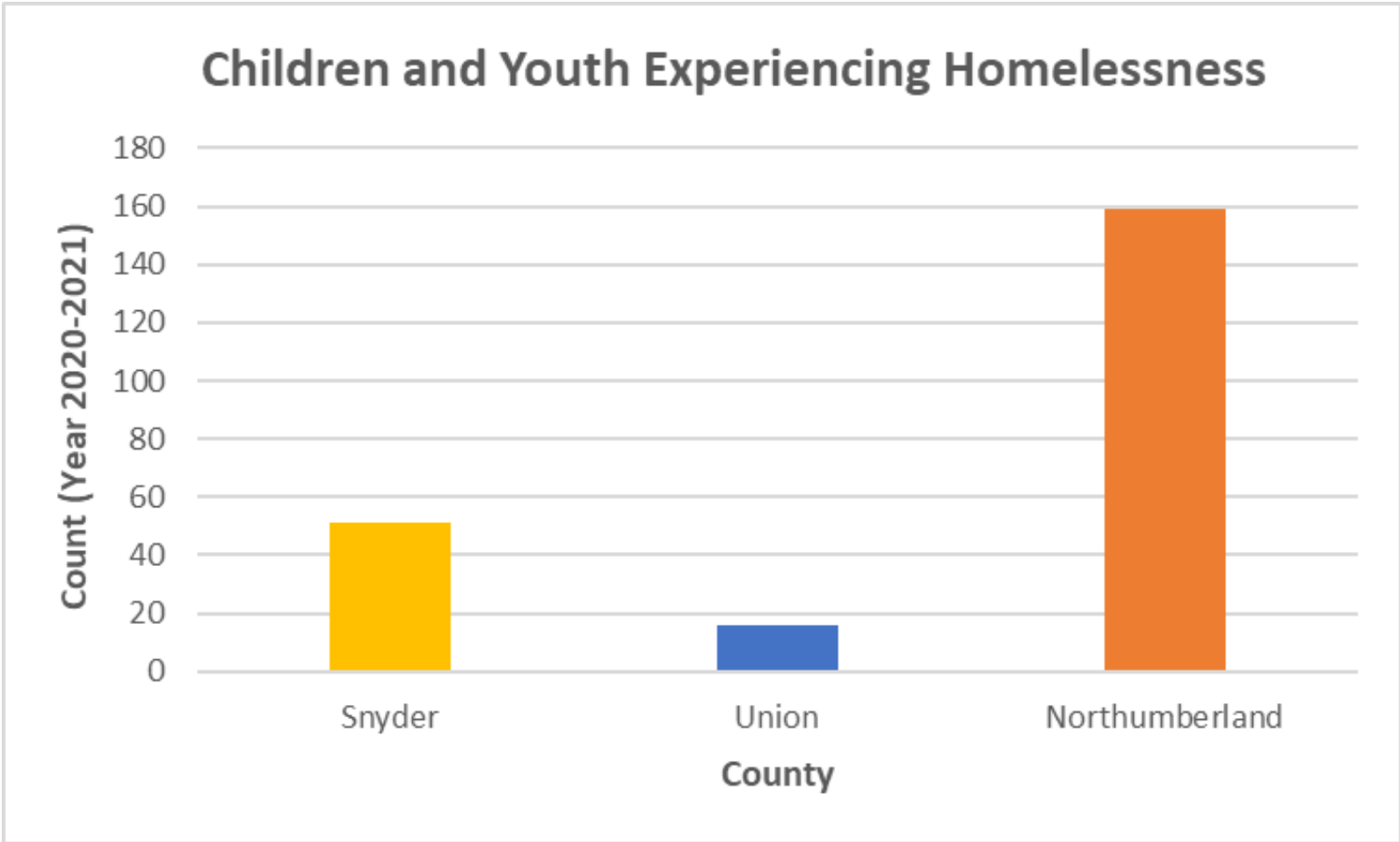
Source: 2021 Pennsylvania Behavioral Risk Factor Surveillance Survey.

▶ Transportation



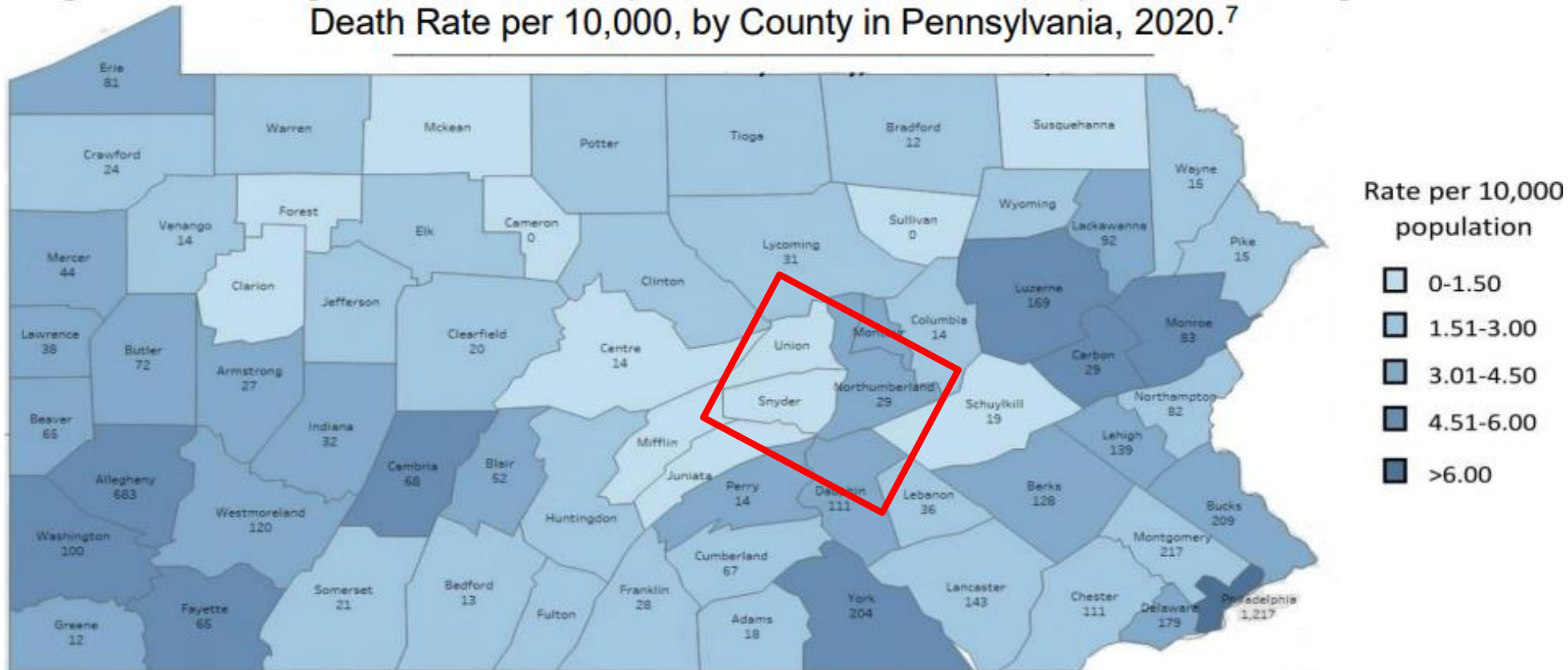
[Transit Map \(penndot.gov\)](http://penndot.gov)
[30027 2021 Agency Profile \(dot.gov\)](http://dot.gov)

Housing



Substance Use

Figure SU.2: Drug Overdose Deaths (Accidental or Undetermined) and Crude Drug Overdose Death Rate per 10,000, by County in Pennsylvania, 2020.⁷



*Counts for counties with overdose death counts between 1 and 9 are suppressed

Breakouts



▶ Prompt 1

- What types of organizations should you be collaborating with to reduce SDOH in your catchment area?

▶ Prompt 2

- How can you incorporate the topics of SDOH as you train your staff and students?

▶ Prompt 3

- What solutions can you contribute towards reducing a barrier for a social determinant of health?

Feedback



Closing Remarks

"We need participation and cross collaboration among all sectors and their professionals, the skill and breadth of the willing, and the advocacy of the determined".

Daniel Dawes

Executive Director, Institute of Global Health Equity

Thank You

Questions/Comments?

Contact Information:

Aubrey Juris
Office of Health Equity
c-aujuris@pa.gov